

IDENTITY & SECURITY



# MORPHOACCESS® SIGMA EXTREME SERIES

Access & Time fingerprint terminal  
for harsh operating conditions





# MORPHOACCESS® SIGMA EXTREME SERIES

## Robust in all aspects



The MA SIGMA Extreme, including its large capacitive touchscreen, is resistant to vandalism and can withstand the impact of a 500g (1 lb.) steel ball dropped from a height of 2 meters (6.5 ft.).



The product enclosure, front and rear, is sealed and impermeable to dust and water.



### TOUGH HOUSING

- Polycarbonate (PC) strong plastics
- Minimum thickness of 3.5 mm (0.14 in.)
- Resistant to UV and weathering (UL 746C fl rated)
- Dirt-repellent grained texture

### TEMPERED GLASS

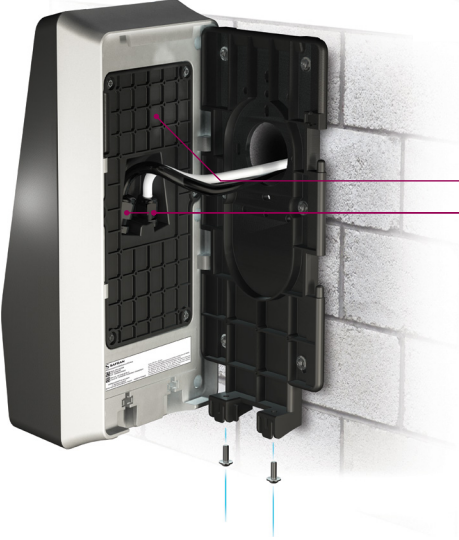
- 3.8 mm (0.15 in.) thick

### ENHANCED MAN MACHINE INTERFACE

- Very bright capacitive touchscreen, equipped with an ambient light sensor that automatically adjusts the display illumination
- Powerful loudspeaker suited to noisy environments

### FIELD-PROVEN SENSOR

- Largest single fingerprint optical sensor on the market (23x23 mm)
- FBI PIV IQS certified
- Widely deployed in harsh environments (mines, seaports, etc.)



### METICULOUS SEALING

- Screwed, sealed back panel protects electronics
- Fixed cable glands protect wiring

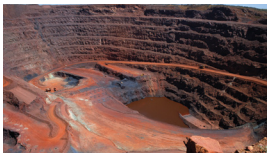
### STURDY WALL MOUNTING

- Thick wall plate (3.5 to 11.4 mm / 0.14 to 0.45 in.), fixed with 6 peripheral screws (recommended, also compatible with standard electrical boxes)
- Ingenious, symmetrical lift-and-rotate opening mechanism enables easy in place maintenance
- 4 lateral hanging pins + 2 bottom fastening screws
- Withstands a load > 50 kg (110 lb.) vertically and horizontally

## For demanding environments



MANUFACTURING SITES



MINES



OIL & GAS



POWER PLANTS



CONSTRUCTION SITES



RAILROAD INDUSTRY



AIRPORTS



SEAPORTS



SPORT ARENAS



CAMPUSES

Rugged and powerful, the MorphoAccess® SIGMA Extreme is a remarkable addition to the SIGMA Family of fingerprint readers.

Based on the same platform as other SIGMA devices, the outdoor MA SIGMA Extreme is specifically designed to operate in difficult environments (dust, salt mist, tough manual workplaces, etc.) and in harsh weather conditions.

With the entire SIGMA Family, integrators have a complete range of biometric terminals at their disposal, compatible with each other, to secure any kind of use case scenario – whether indoors or outdoors – with the World's most accurate fingerprint technology.



THE SIGMA FAMILY

## Key features

### WORLD #1 FINGERPRINT TECHNOLOGY



- Morpho fingerprint technology ranked #1 by NIST for accuracy
- Extendable identification capacity: 1:5K (default), 1:10K, 1:50K or 1:100K users, with genuine matching<sup>(1)</sup>
- 1:100K identification in less than 1 second (for frequent users)
- Accuracy maintained regardless of number of users

### ANTI-FRAUD FEATURES



- Patented, BSI<sup>(2)</sup> certified electro-optical Fake Finger Detection technology (option)
- Face detection and picture logging
- Duress finger option
- Timed anti-pass back function<sup>(3)</sup>
- Banned/authorized user lists
- Tamper switches

### TIME & ATTENDANCE FUNCTIONS



- Touchscreen Time Clock, featuring 16 programmable function keys
- Access time slots and holidays scheduling
- Accurate clock in/out records (up to 1 Million logs storage capacity)
- Real-time employee notifications
- Job Code management

### VIDEOPHONE



- Built-in camera, speaker and microphone
- Standard IP-based audio/video interface
- Use cases:
  - Call-in function: e.g. employees can quickly report a problem right from the Time Clock
  - Surveillance: the terminal can be used by security staff to get pictures remotely from the security post

### EMBEDDED WEB SERVER



- After connection (via Ethernet or optional Wi-Fi) to a laptop, tablet or smartphone, it enables administrator to:
  - Trigger on-device enrollment (enrollment on product touchscreen is also available)
  - Configure product (full settings)
  - Get transaction logs

### FLEXIBLE ARCHITECTURE



- Prox®, iClass® or MIFARE®/DESFire®/NFC<sup>(4)</sup> contactless card reader as an option
- Various software integration options:
  - ILV or Thrift commands at low protocol level
  - Morpho Integrator's Kit (MIK) at SDK component level
  - MorphoManager at application level

## TECHNICAL SPECIFICATIONS

- CPU: ARM® Cortex™-A9 core 1GHz
- 5" WVGA color capacitive touchscreen with ambient light sensor
- Front camera for face picture capture and videophone
- Loudspeaker & microphone
- Audio & video player
- FBI PIV IQS certified optical fingerprint sensor
- Contactless reader options:
  - Prox®
  - iClass®
  - MIFARE®/MIFARE® Plus/DESFire®/NFC<sup>(4)</sup>

- Internal storage capacity: 512MB Flash, 1GB RAM + 8GB microSD Card
  - 5000 user records (2 fingers + 1 duress each), extendable up to 100,000 with licenses
  - 250,000 IDs in authorized user list
  - 1 Million transaction logs
  - 10,000 face picture logs
- Network/Communication:
  - Ethernet, RS485, RS422, USB
  - Wi-Fi option
- Inputs/outputs:
  - Wiegand In & Out (customizable up to 512 bits), Door Relay, 3 GPI (including Door monitoring), 3 GPO

- Power supply:
  - 12 to 24 V DC (1A min @12V)
  - Power over Ethernet (PoE) – Compatible with PoE+ switches
- Tamper switches
- Operating conditions:
  - Temperature: -20°C to 60°C (-4°F to 140°F)
  - Humidity: 10% to 95% (non condensing)
- Ingress protection: IP65
- Mechanical impact protection: IK09
- HxWxD = 301\*142\*97 mm (11.85\*5.59\*3.82 in.)
- Weight: ~1.6kg (~3.5 lb.)
- EMC/Safety standards: CE, CB, FCC
- RoHS, REACH and WEEE compliant

<sup>(1)</sup> Search carried out against a single database

<sup>(2)</sup> Bundesamt für Sicherheit in der Informationstechnik (German Federal Agency for the Security of Information Technologies)

<sup>(3)</sup> Prevents repeated authorizations by the same user, within a configurable time period

<sup>(4)</sup> NFC support depends on the model/settings of the smartphone used with the MA SIGMA Extreme device

---

# POWERED BY TRUST

---

Safran Identity & Security  
11, boulevard Gallieni – 92130 Issy-les-Moulineaux – FRANCE  
Phone: +33 (0)1 58 11 25 00 – Fax: +33 (0)1 58 11 25 50  
[www.safran-identity-security.com](http://www.safran-identity-security.com)

---

