

# MORPHOMANAGER

SEAMLESS INTEGRATION OF BIOMETRICS AND ACCESS CONTROL



Combined with Morpho biometric terminals, MorphoManager provides a seamless, comprehensive solution for Access Control and Time & Attendance applications. It offers easy configuration, group-based settings, centralized management and detailed reporting.

- Enroll fingerprint, finger vein/print and 3D facial templates in a single system
- Encode MIFARE®, DESFire® and iClass® smartcards
- Manage up to 100,000 users and 5,000 biometric terminals
- Use as standalone application or integrated with 3<sup>rd</sup> party access control systems

# MORPHOMANAGER

## SEAMLESS INTEGRATION OF BIOMETRICS AND ACCESS CONTROL

### USER MANAGEMENT

- Manage up to 100,000 users in database
- Enroll demographics, photo, fingerprint/finger vein data (up to 10 fingers) and 3D face data at once
- Maximize data acquisition quality and overall biometric system performance using sensors, coding algorithms and enrollment processes designed by the World #1 in biometrics
- Allocate Operator roles and privileges
- Define User access time slots and group assignment
- Encode MIFARE®, DESFire® and iClass® contactless cards
- Print identity cards from customizable templates

### REPORTING & BACKUP TOOLS

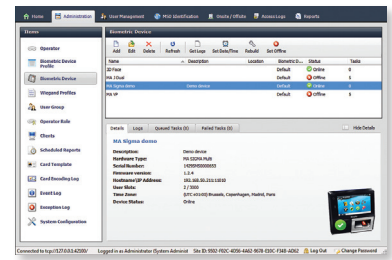
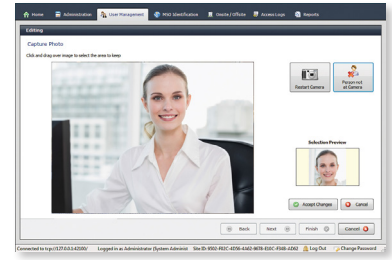
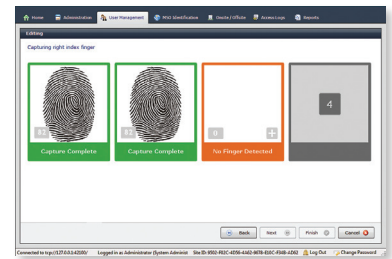
- Retrieve in real-time and store up to 1,000,000 access logs
- User Onsite/Offsite reporting
- Accurate time recording
- Various reporting options available to display information about:
  - User activity
  - Terminal activity
  - Group activity
- Automatic export of transaction history for import into payroll packages
- Database backup and copy tools

### TERMINAL ADMINISTRATION

- Connect and configure up to 5,000 biometric readers via LAN, WAN or Wi-Fi
- Integrate multiple biometric modalities (fingerprint, finger vein and face) and multiple recognition factors (biometrics, card and PIN) in a single system
- Group terminals according to security perimeters within the installation
- Select conventional access control mode or advanced time & attendance features
- Set Wiegand or closed contact output

### DEPLOYMENT

- Save time and money with reduced setup time, intuitive interface and field-proven workflows
- Single PC or advanced Client/Server configuration
- Use as standalone application or integrated with 3<sup>rd</sup> party access control systems, including<sup>(\*)</sup>:
  - AMAG Symmetry
  - Apollo APACS
  - Blackboard Transact
  - Cisco CPAM
  - ControlSoft Lite/Pro
  - DSX WinDSX
  - Entry-Master
  - Honeywell WIN-PAK (SE/PE)
  - Identicard Premisys
  - Infinias Intelli-M
  - Inner Range Integrati
  - Johnson Controls P2000
  - Kantech Entrapass
  - Keyscan System VII
  - Lenel OnGuard
  - Maxxess eFusion
  - Open Options DNA Fusion
  - Paxton Net2
  - S2 Netbox
  - Schneider Electric Continuum
  - Siemens SiPass
  - Software House C-Cure 9000

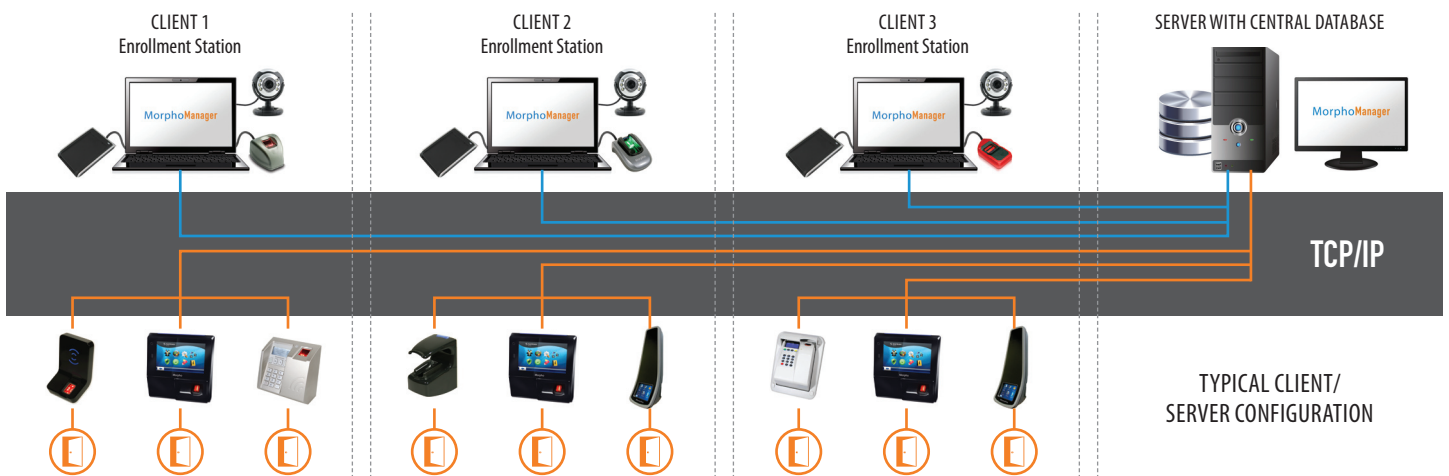


## SPECIFICATIONS

- **HARDWARE CONFIGURATION**
  - Processor: Dual core CPU
  - RAM: 4 GB
  - Ports: 3 USB ports
  - Network: 100Mbs Ethernet port required for client/server connections
  - Camera: any USB webcam
- **OPERATING SYSTEMS**
  - Windows XP SP3 / Vista SP1 / 7 / 8 / 8.1
  - Windows Server 2003 R2 / 2003 R2 SP2 / 2008 / 2008 R2 / 2012 / 2012 R2
- **DATABASE**
  - SQL Server (2005 or later)
  - SQL Server Compact Edition 4.0

### PACK OPTIONS

	MorphoSmart™ Enrollment Device	Recommended for
MorphoManager LIGHT	MSO 1300	Single PC administration of a limited number of terminals (fingerprint and facial)
MorphoManager PRO	MSO 300	Client/Server administration of medium to large installations (fingerprint and facial terminals)
MorphoManager MULTIMODAL	FINGER VP DESKTOP	Single PC or Client/Server administration of installations involving fingerprint, facial and vein/print terminals



<sup>(\*)</sup> MorphoManager is compatible with the systems presented here at time of publication. This list is continually being enlarged to incorporate new systems.

### Morpho

Phone: +33 (0)1 58 11 73 42 - Fax: +33 (0)1 58 11 25 50 - www.morpho.com - www.biometric-terminals.com  
 Registered Office: 11, boulevard Gallieni - 92130 Issy-les-Moulineaux - FRANCE  
 Société anonyme au capital de 159.876.075 euros - 440 305 282 RCS Nanterre

